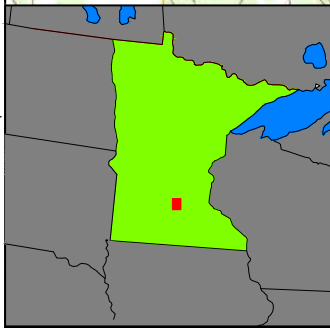
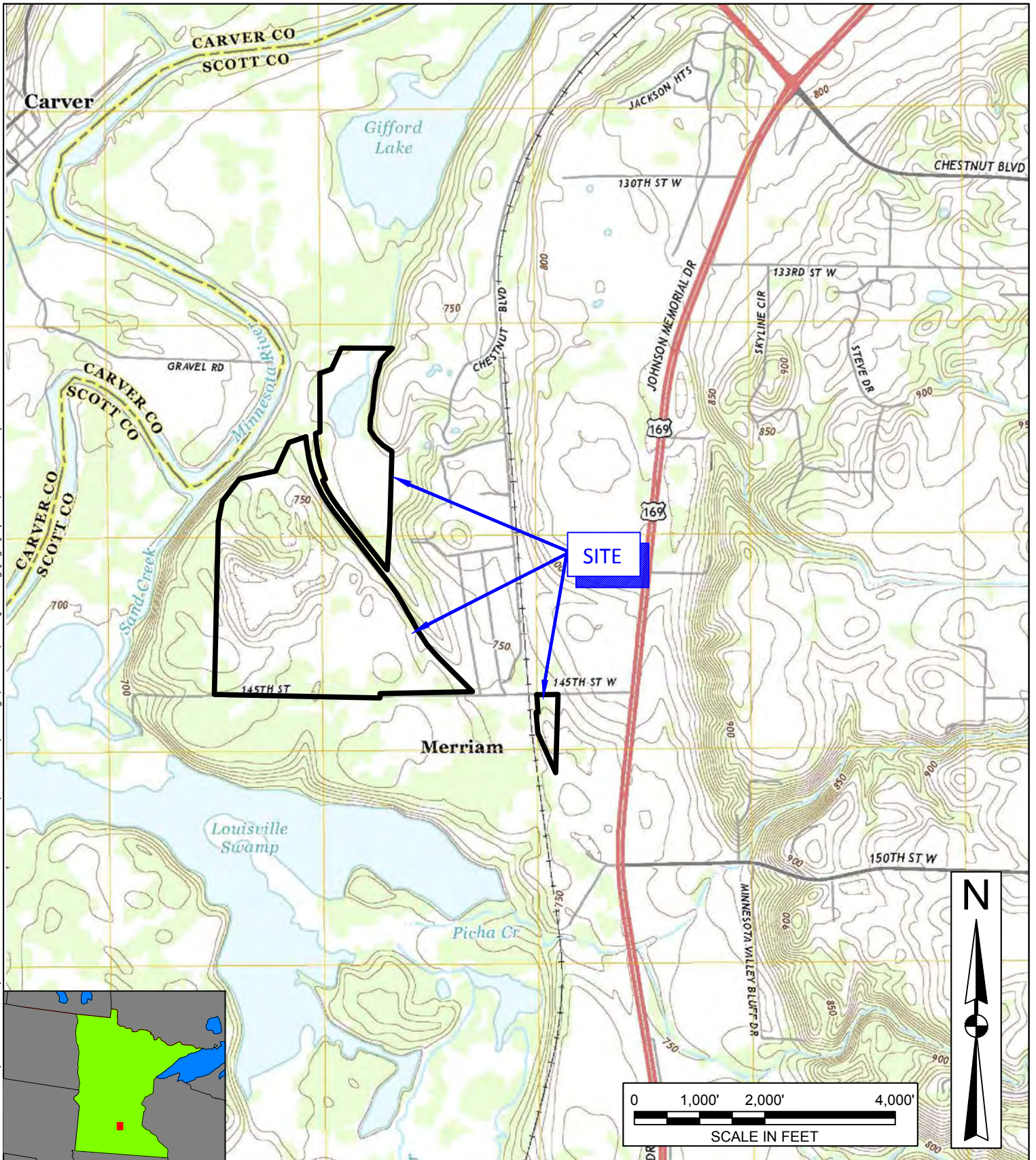



© 2013 - GZA GeoEnvironmental, Inc. GZA-1\152100to152199\152160.70-MINNESOTA VALLEY SAND\DRAWINGS\AutoCAD\2013 Quad.dwg [Fig 2] April 08, 2015 - 12:41pm kara.kunz



SOURCE: U.S.G.S. SHAKOPEE, MINN. QUADRANGLE MAP (2013)							
SOURCE: U.S.G.S. JORDAN EAST, MINN. QUADRANGLE MAP (2013)							
PREPARED BY:  <b>GZA GeoEnvironmental, Inc.</b> Engineers and Scientists 20900 SWENSON DRIVE, SUITE 150 WAUKESHA, WISCONSIN 53186 (262) 754-2560		NO.		ISSUE/DESCRIPTION		BY	
PREPARED FOR: <b>FAIRMOUNT SANTROL</b>		USGS QUADRANGLE MAP EXCERPT		SCOPING EAW MINNESOTA VALLEY SAND SHAKOPEE, MINNESOTA		FIGURE  <b>2</b>	
PROJ MGR: MJK DESIGNED BY: CR	REVIEWED BY: MJK DRAWN BY: KLK	CHECKED BY: CR SCALE: see above	DATE 4/8/15	PROJECT NO. 20.0152160.70	REVISION NO.	SHEET NO.	

UNLESS SPECIFICALLY STATED BY WRITTEN AGREEMENT, THIS DRAWING IS THE SOLE PROPERTY OF GZA GEOENVIRONMENTAL, INC. (GZA). THE INFORMATION SHOWN ON THE DRAWING IS SOLELY FOR USE BY GZA'S CLIENT OR THE CLIENT'S DESIGNATED REPRESENTATIVE FOR THE SPECIFIC PROJECT AND LOCATION IDENTIFIED ON THE DRAWING. THE DRAWING SHALL NOT BE TRANSFERRED, REUSED, COPIED, OR ALTERED IN ANY MANNER FOR USE AT ANY OTHER LOCATION OR FOR ANY OTHER PURPOSE WITHOUT THE PRIOR WRITTEN CONSENT OF GZA. ANY TRANSFER, REUSE OR MODIFICATION TO THE DRAWING BY THE CLIENT OR OTHERS, WITHOUT THE PRIOR WRITTEN EXPRESS CONSENT OF GZA, WILL BE AT THE USER'S SOLE RISK AND WITHOUT ANY RISK OR LIABILITY TO GZA.