


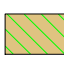


Key:

-  Zone X - Areas determined to be outside 500-year flood plain.
-  Zone X - Areas of 500-year flood; areas of 100-year flood with average depths of less than 1 foot or with drainage areas less than 1 square mile; and areas protected by levees from 100-year flood.
-  Zone AE - Base flood elevations determined by the 100-year flood.
-  Floodway Areas in Zone AE

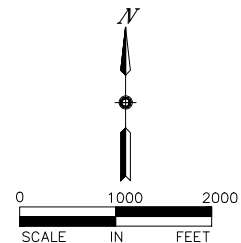
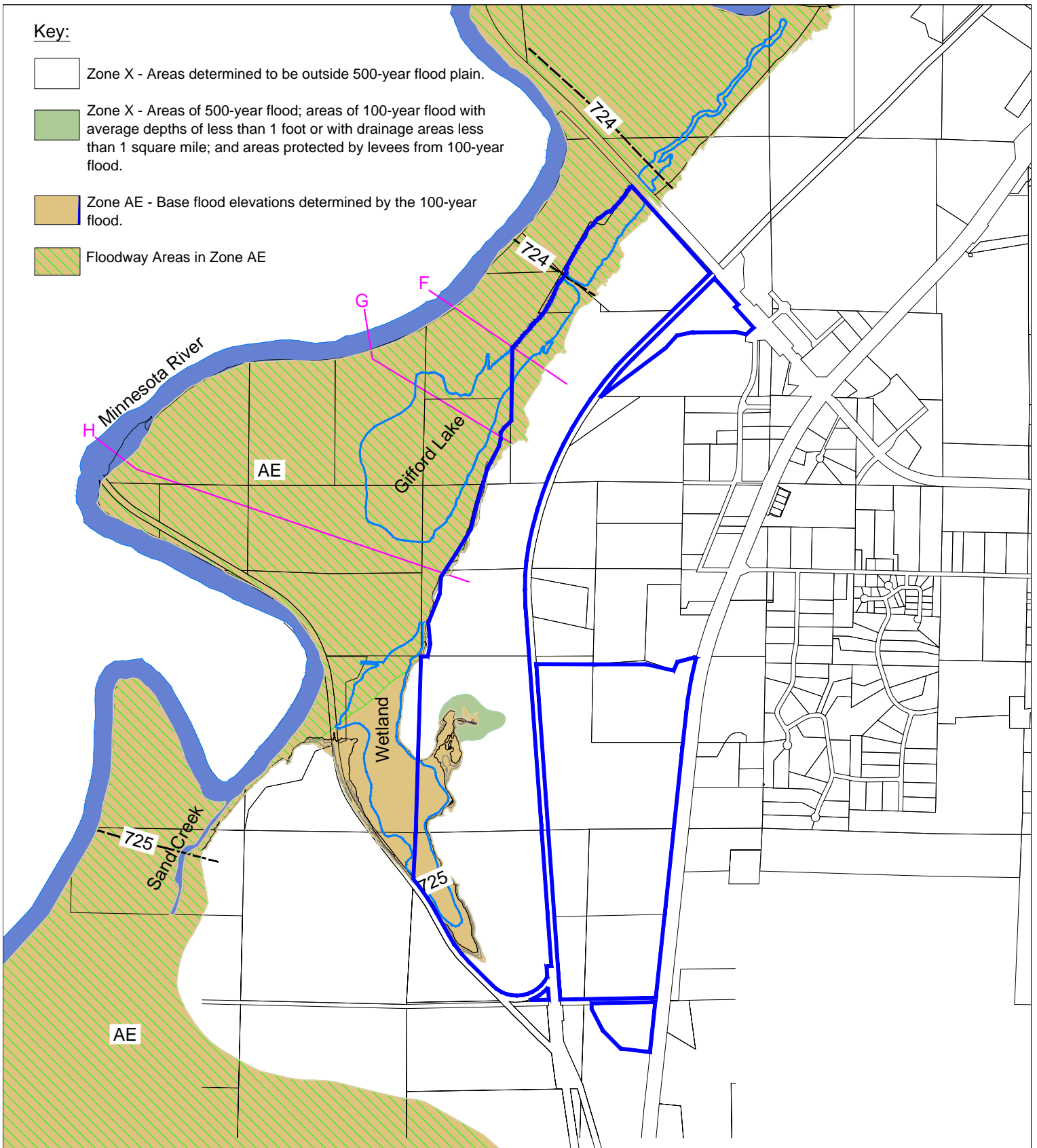


Figure 17
Flood Insurance Rate Map Excerpt
Merriam Junction Sands
Scoping EAW

