

APPENDIX C-5 - CSAH 15/ALTON AVENUE FUTURE STUDY ALIGNMENT

LEGEND

- FLOW DIRECTION
- SCHEMATIC STORM SEWER SYSTEM
- POSSIBLE ADDITION STORM SEWER
- POSSIBLE DETENTION POND LOCATION
- POSSIBLE INFILTRATION SWALE
- CULVERT LOCATION



PRELIMINARY
FOR REVIEW ONLY

Scott County 15
(12th ST. NE)

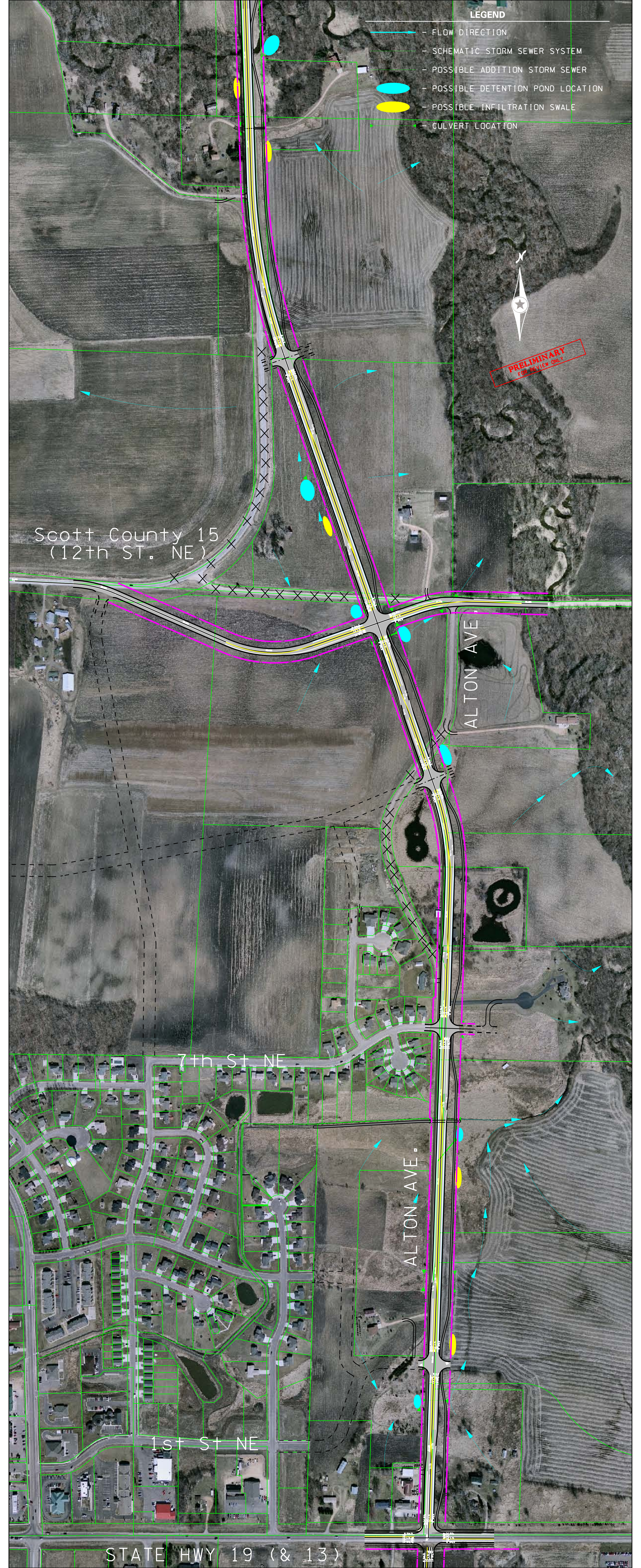
ALTON AVE.

7th St NE

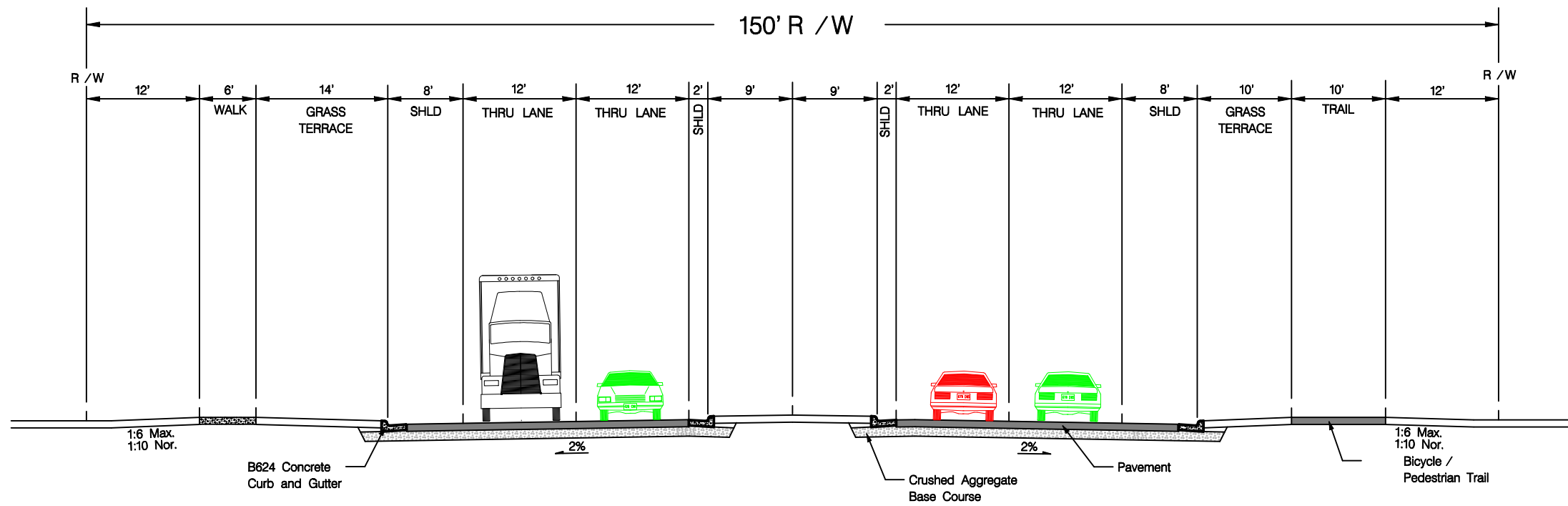
ALTON AVE.

1st St NE

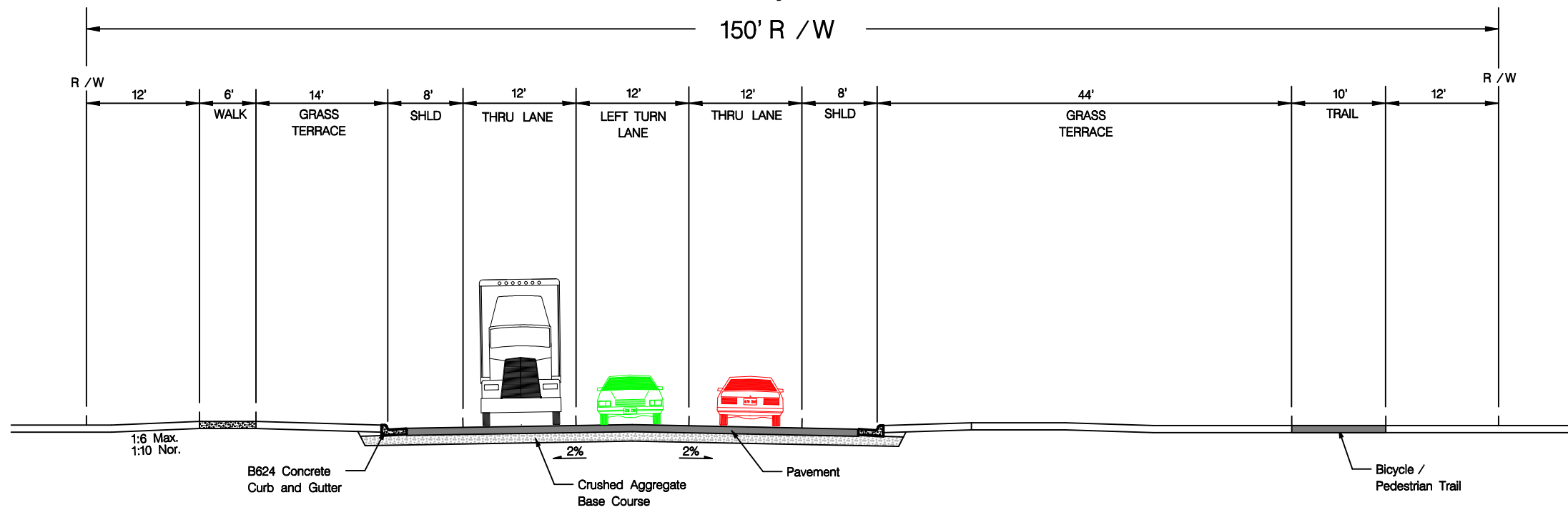
STATE HWY 19 (& 13)



Future Typical Section – 4 Lane Configuration
Four Lane with Median and Left Turn Lanes



Typical Section – 3 Lane Configuration
3 Lane Urban Roadway with Center Left Turn Lane



ATTACHMENT B



DATE:
09/21/04

FILE NO.
ASCOTT0404.00

CSAH 15 TYPICAL SECTION
SCOTT COUNTY

EXHIBIT
NO. A