

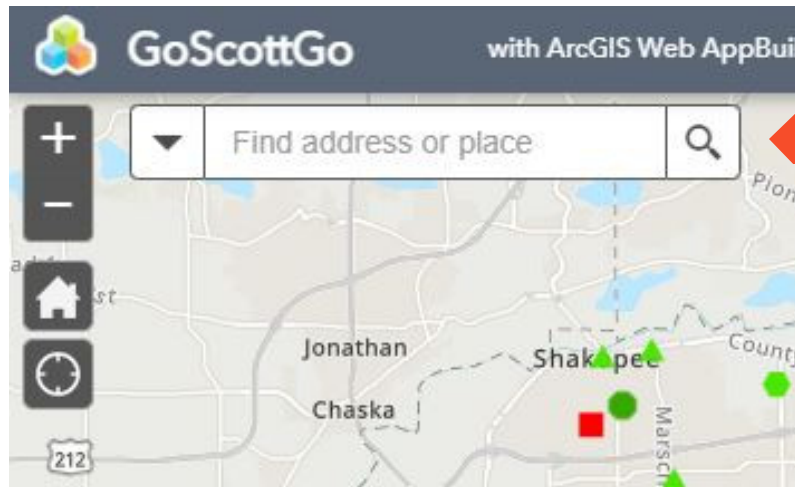


Go Scott Go

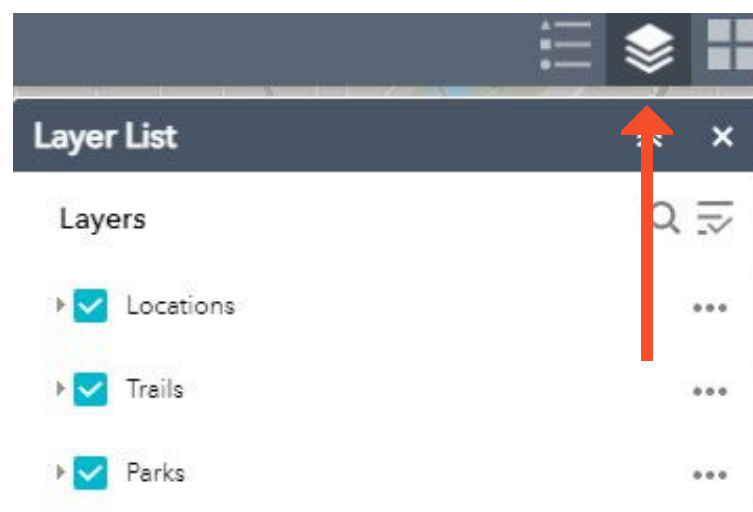
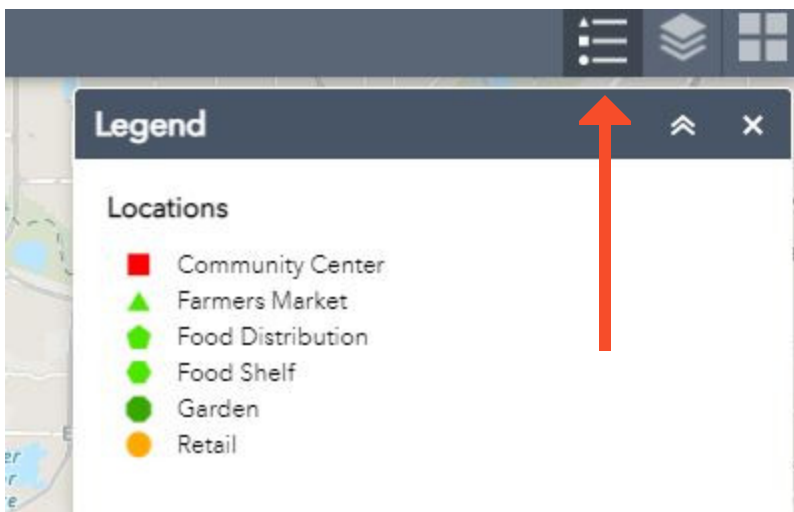
How to Use the Map



1. Choose your location: In the upper left hand corner search by an address or city within Scott County.



2. Determine what you're looking for: Use legend in upper right hand corner to determine what resource you're looking for. If looking for a park or trail- click on the layer list next to legend and select trails & parks.



3. Find your resource: Click on the resource you're interested in to bring up more information including a link to their website.

