



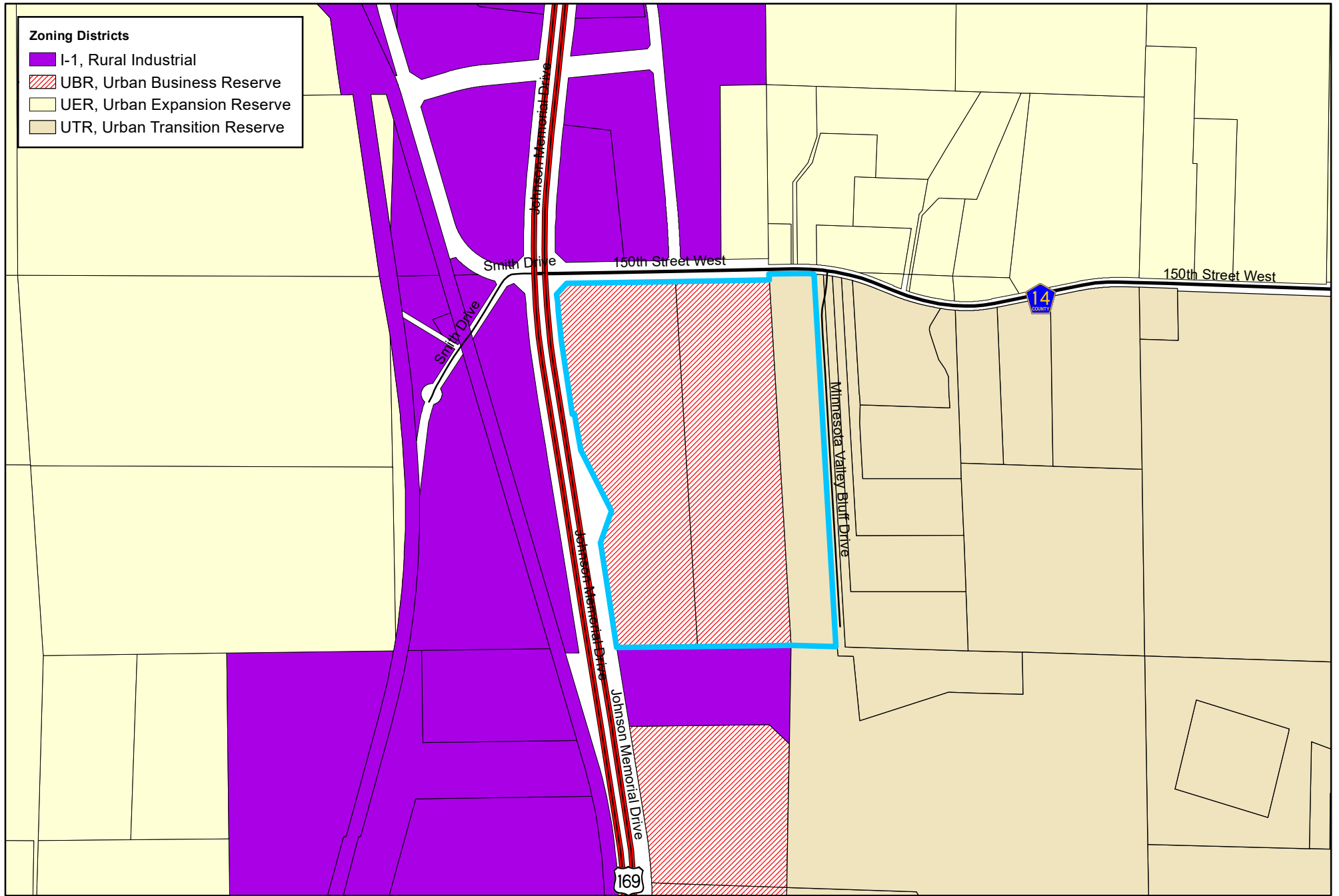


Zoning Districts

-  I-1, Rural Industrial
-  UBR, Urban Business Reserve
-  UER, Urban Expansion Reserve
-  UTR, Urban Transition Reserve



Scott County Community Services
Environmental Services
200 Fourth Avenue West
Shakopee, MN 55379

Sever's Festival EAW



ZONING - ADJACENT PROPERTIES

Figure 6

2-1-19

Source: Scott County Zoning Administration